

Hartland Ave between 244 and 256 Hartland Ave

October 21, 2019 To October 25, 2019



The data presented here is for information purposes only and should not be considered authoritative for construction, geotechnical, engineering, navigational, legal, or other site-specific uses. The information shared is owned by the Transportation Division of the Engineering Department at the District of Saanich. Accuracy is not guaranteed.

Start Date: 21-Oct-19
 Start Time: 0:02
 Station ID: M0021-01

Location 1: Hartland Ave between 244 and 256 Hartland Ave

Note:

DATE:	October 21, 2019		October 22, 2019		October 23, 2019		October 24, 2019		October 25, 2019		WK AVG		WK AVG	HOURLY
	MON		TUE		WED		THURS		FRI				CH 1+2	%
Time:	EB	WB	EB	WB	EB	WB	EB	WB	EB	WB	EB	WB		
12-1 AM			2	0	0	1	0	0			1	0	1	0.1%
1-2 AM			0	1	0	1	0	2			0	1	1	0.1%
2-3 AM			0	0	0	0	0	1			0	0	0	0.0%
3-4 AM			0	0	0	0	0	0			0	0	0	0.0%
4-5 AM			1	1	0	1	0	0			0	1	1	0.1%
5-6 AM			3	5	5	4	5	3			4	4	8	0.5%
6-7 AM			17	18	19	26	18	23			18	22	40	2.6%
7-8 AM			31	31	29	22	33	27			31	27	58	3.7%
8-9 AM			29	30	27	45	28	45			28	40	68	4.4%
9-10 AM			58	68	51	61	66	72			58	67	125	8.0%
10-11 AM			79	73	77	70	80	76			79	73	152	9.7%
11-12 PM			81	79	78	74	84	87			81	80	161	10.3%
12-1 PM			91	95	75	83	75	64			80	81	161	10.3%
1-2 PM			73	61	96	85	75	91			81	79	160	10.3%
2-3 PM			80	91	75	68	107	84			87	81	168	10.8%
3-4 PM			72	68	68	68	58	63			66	66	132	8.5%
4-5 PM			63	77	48	54	64	59			58	63	122	7.8%
5-6 PM			51	36	45	51	41	31			46	39	85	5.5%
6-7 PM			22	16	30	24	26	18			26	19	45	2.9%
7-8 PM			9	8	22	10	13	14			15	11	25	1.6%
8-9 PM			9	7	10	10	11	14			10	10	20	1.3%
9-10 PM			5	4	7	3	6	7			6	5	11	0.7%
10-11 PM			1	4	2	6	3	7			2	6	8	0.5%
11-12 AM			3	2	3	3	1	2			2	2	5	0.3%
LANES			780	775	767	770	794	790			780	778	1559	100.0%
TOTAL			1555		1537		1584				1560			
	MON		TUE		WED		THURS		FRI		WK AVG			

PEAK HOUR					TOTAL VEHICALS-PEAK PERIODS		2 HOUR PEAK INTERVALS				
MAX. 7 - 9 am PEAK HOUR	68	⇒	4.4%	between 8-9 AM	654	⇒	6 HR TOTAL	2 HR AM (7 - 9 AM)			
MAX. 7 - 11 am PEAK HOUR	152	⇒	9.7%	between 10-11 AM	332	⇒	4 HR TOTAL	VEH / HR	VEH / 2HR	2 HR %	
MAX. 11 am - 1 pm PEAK HOUR	161	⇒	10.3%	between 11-12 PM				7-8 AM	58	126	8.1%
MAX. 11 am - 3 pm PEAK HOUR	168	⇒	10.8%	between 2-3 PM				8-9 AM	68		
MAX. 4 - 6 pm PEAK HOUR	122	⇒	7.8%	between 4-5 PM			24 HOUR FACTORS	2 HR NOON (11 - 1 PM)			
MAX. 3 - 6 pm PEAK HOUR	132	⇒	8.5%	between 3-4 PM	2.38	⇒	6-24 HR FACT.	VEH / HR	VEH / 2HR	2 HR %	
					4.69	⇒	4-24 HR FACT.	11-12 PM	161	322	20.7%
								12-1 PM	161		
								2 HR PM (4 - 6 PM)			
								VEH / HR	VEH / 2HR	2 HR %	
								4-5 PM	122	207	13.3%
								5-6 PM	85		

Hartland Ave between 244 and 256 Hartland Ave

Westbound

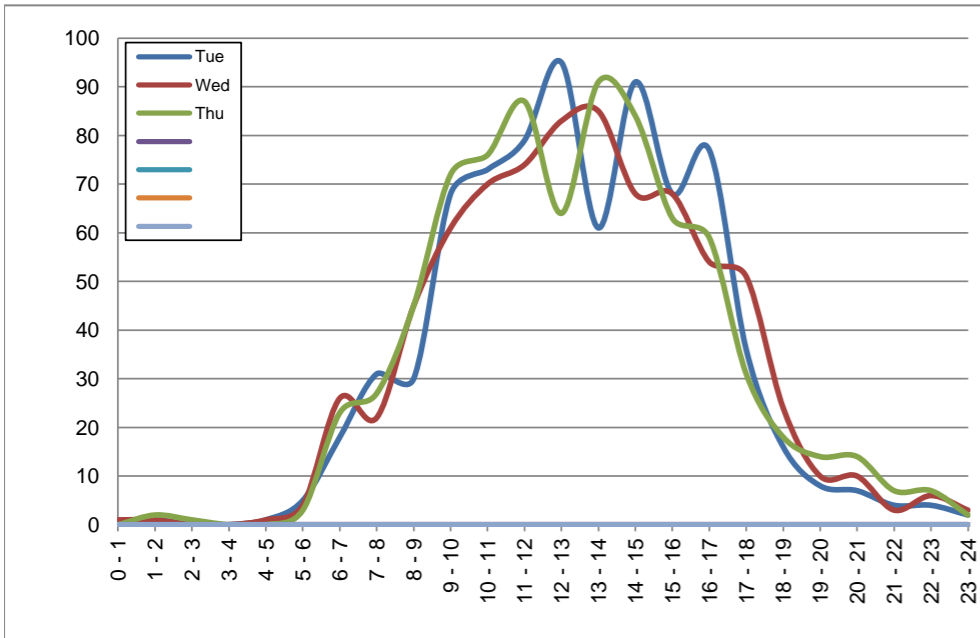
October 22, 2019 to October 24, 2019

Hourly Volumes

Time Period	Tue	Wed	Thu				
	Oct 22	Oct 23	Oct 24				
0 - 1	0	1	0				
1 - 2	1	1	2				
2 - 3	0	0	1				
3 - 4	0	0	0				
4 - 5	1	1	0				
5 - 6	5	4	3				
6 - 7	18	26	23				
7 - 8	31	22	27				
8 - 9	30	45	45				
9 - 10	68	61	72				
10 - 11	73	70	76				
11 - 12	79	74	87				
12 - 13	95	83	64				
13 - 14	61	85	91				
14 - 15	91	68	84				
15 - 16	68	68	63				
16 - 17	77	54	59				
17 - 18	36	51	31				
18 - 19	16	24	18				
19 - 20	8	10	14				
20 - 21	7	10	14				
21 - 22	4	3	7				
22 - 23	4	6	7				
23 - 24	2	3	2				
Day Total	775	770	790				

15-Minute Volumes

Time Start	Tue	Wed	Thu				
	Oct 22	Oct 23	Oct 24				
0:00	0	1	0				
0:15	0	0	0				
0:30	0	0	0				
0:45	0	0	0				
1:00	0	0	0				
1:15	0	0	1				
1:30	0	1	0				
1:45	1	0	1				
2:00	0	0	1				
2:15	0	0	0				
2:30	0	0	0				
2:45	0	0	0				
3:00	0	0	0				
3:15	0	0	0				
3:30	0	0	0				
3:45	0	0	0				
4:00	0	0	0				
4:15	1	0	0				
4:30	0	0	0				
4:45	0	1	0				
5:00	0	0	0				
5:15	0	1	2				
5:30	2	2	0				
5:45	3	1	1				
6:00	2	4	6				
6:15	3	1	0				
6:30	7	15	8				
6:45	6	6	9				
7:00	6	5	7				
7:15	9	5	8				
7:30	7	6	4				
7:45	9	6	8				
8:00	0	5	11				
8:15	5	4	6				
8:30	10	18	12				
8:45	15	18	16				
9:00	14	16	15				
9:15	12	13	14				
9:30	22	14	23				
9:45	20	18	20				
10:00	21	12	17				
10:15	16	18	25				
10:30	16	20	11				
10:45	20	20	23				
11:00	19	17	23				
11:15	15	20	26				
11:30	23	20	20				
11:45	22	17	18				
12:00	24	15	12				
12:15	23	18	19				
12:30	29	23	21				
12:45	19	27	12				
13:00	11	18	17				
13:15	20	21	24				
13:30	16	23	27				
13:45	14	23	23				
14:00	24	14	19				
14:15	26	20	25				
14:30	20	16	19				
14:45	21	18	21				
15:00	12	15	12				
15:15	24	16	15				
15:30	15	18	21				
15:45	17	19	15				
16:00	20	17	14				
16:15	15	6	16				
16:30	26	14	20				
16:45	16	17	9				
17:00	11	13	7				
17:15	10	16	4				
17:30	7	13	7				
17:45	8	9	13				
18:00	6	9	6				
18:15	5	3	5				
18:30	3	8	1				
18:45	2	4	6				
19:00	4	6	6				
19:15	1	1	2				
19:30	1	1	3				
19:45	2	2	3				
20:00	3	3	6				
20:15	2	4	4				
20:30	1	1	1				
20:45	1	2	3				
21:00	2	0	3				
21:15	1	0	1				
21:30	0	0	1				
21:45	1	3	2				
22:00	0	3	2				
22:15	1	1	3				
22:30	2	0	1				
22:45	1	2	1				
23:00	0	0	0				
23:15	0	2	2				
23:30	2	0	0				
23:45	0	1	0				



Site notes:

Hartland Ave between 244 and 256 Hartland Ave

Eastbound

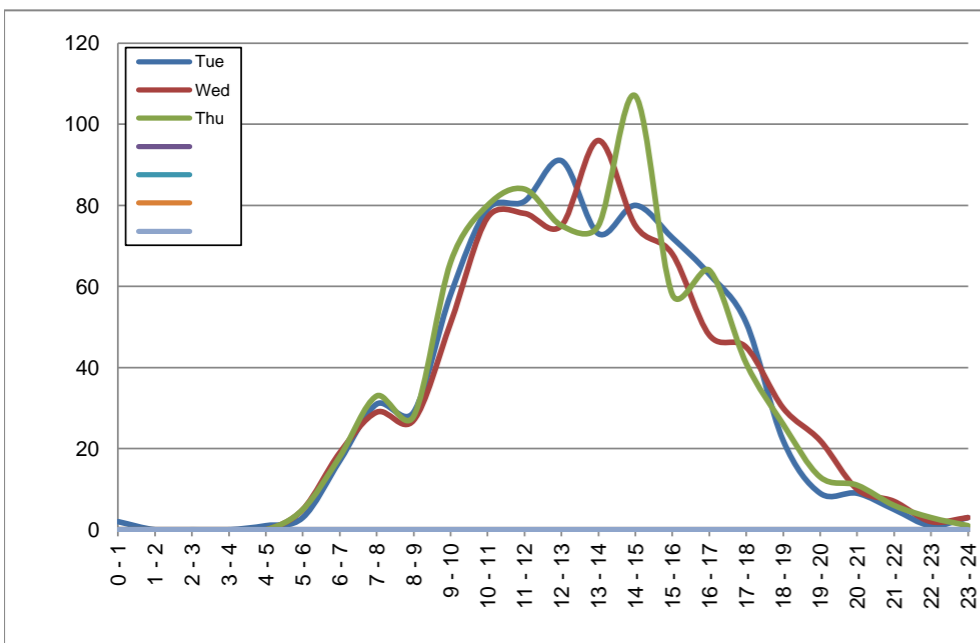
October 22, 2019 to October 24, 2019

Hourly Volumes

Time Period	Tue	Wed	Thu				
	Oct 22	Oct 23	Oct 24				
0 - 1	2	0	0				
1 - 2	0	0	0				
2 - 3	0	0	0				
3 - 4	0	0	0				
4 - 5	1	0	0				
5 - 6	3	5	5				
6 - 7	17	19	18				
7 - 8	31	29	33				
8 - 9	29	27	28				
9 - 10	58	51	66				
10 - 11	79	77	80				
11 - 12	81	78	84				
12 - 13	91	75	75				
13 - 14	73	96	75				
14 - 15	80	75	107				
15 - 16	72	68	58				
16 - 17	63	48	64				
17 - 18	51	45	41				
18 - 19	22	30	26				
19 - 20	9	22	13				
20 - 21	9	10	11				
21 - 22	5	7	6				
22 - 23	1	2	3				
23 - 24	3	3	1				
Day Total	780	767	794				

15-Minute Volumes

Time Start	Tue	Wed	Thu				
	Oct 22	Oct 23	Oct 24				
0:00	1	0	0				
0:15	1	0	0				
0:30	0	0	0				
0:45	0	0	0				
1:00	0	0	0				
1:15	0	0	0				
1:30	0	0	0				
1:45	0	0	0				
2:00	0	0	0				
2:15	0	0	0				
2:30	0	0	0				
2:45	0	0	0				
3:00	0	0	0				
3:15	0	0	0				
3:30	0	0	0				
3:45	0	0	0				
4:00	0	0	0				
4:15	0	0	0				
4:30	1	0	0				
4:45	0	0	0				
5:00	0	1	0				
5:15	0	2	0				
5:30	3	1	3				
5:45	0	1	2				
6:00	5	6	4				
6:15	3	2	3				
6:30	6	7	5				
6:45	3	4	6				
7:00	6	4	3				
7:15	10	7	11				
7:30	5	9	8				
7:45	10	9	11				
8:00	11	10	5				
8:15	5	4	10				
8:30	6	6	7				
8:45	7	7	6				
9:00	11	6	6				
9:15	17	15	17				
9:30	12	10	20				
9:45	18	20	23				
10:00	19	17	23				
10:15	21	22	16				
10:30	24	14	25				
10:45	15	24	16				
11:00	21	16	17				
11:15	17	23	17				
11:30	22	21	23				
11:45	21	18	27				
12:00	23	15	19				
12:15	24	21	16				
12:30	15	15	19				
12:45	29	24	21				
13:00	10	27	19				
13:15	26	15	18				
13:30	18	26	16				
13:45	19	28	22				
14:00	17	23	27				
14:15	15	18	29				
14:30	22	12	33				
14:45	26	22	18				
15:00	18	15	12				
15:15	19	19	26				
15:30	19	20	8				
15:45	16	14	12				
16:00	15	12	18				
16:15	16	15	14				
16:30	18	12	15				
16:45	14	9	17				
17:00	15	16	10				
17:15	17	15	15				
17:30	16	13	11				
17:45	3	1	5				
18:00	6	6	11				
18:15	7	8	5				
18:30	7	9	4				
18:45	2	7	6				
19:00	1	5	3				
19:15	4	4	3				
19:30	1	4	6				
19:45	3	9	1				
20:00	5	7	4				
20:15	1	1	1				
20:30	1	0	3				
20:45	2	2	3				
21:00	5	2	1				
21:15	0	1	3				
21:30	0	1	0				
21:45	0	3	2				
22:00	0	2	1				
22:15	0	0	0				
22:30	0	0	0				
22:45	1	0	2				
23:00	0	0	0				
23:15	1	0	0				
23:30	1	0	0				
23:45	1	3	1				



Site notes:

Vehicle Speed Summary

Saanich Engineering Department

Count Id: M0021-01

Filename: Hartland Ave between 244 and 256 Hartland Ave-Oct-2019.xlsm

Location: Hartland Ave between 244 and 256 Hartland Ave

Note:

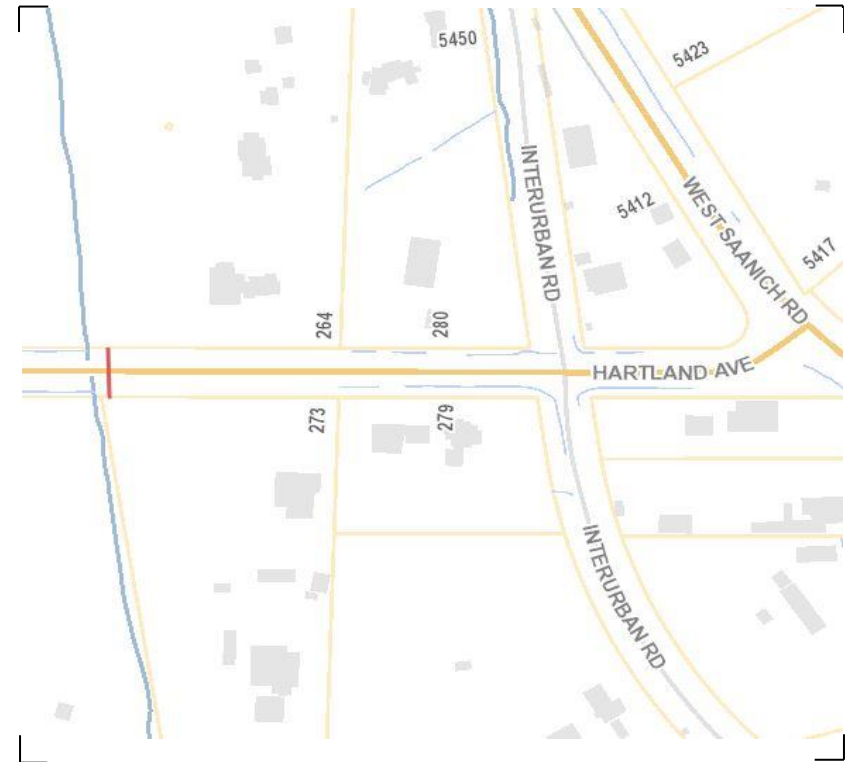
Direction: **East-West**

Dates: **October 21, 2019 To October 25, 2019**

Filtered data

AVG. SPEED	38 mph	62 km/h
50 % SPEED	38 mph	62 km/h
85 % SPEED	44 mph	71 km/h
95 % SPEED	48 mph	77 km/h

Location Map



Hartland Ave between 244 and 256 Hartland Ave

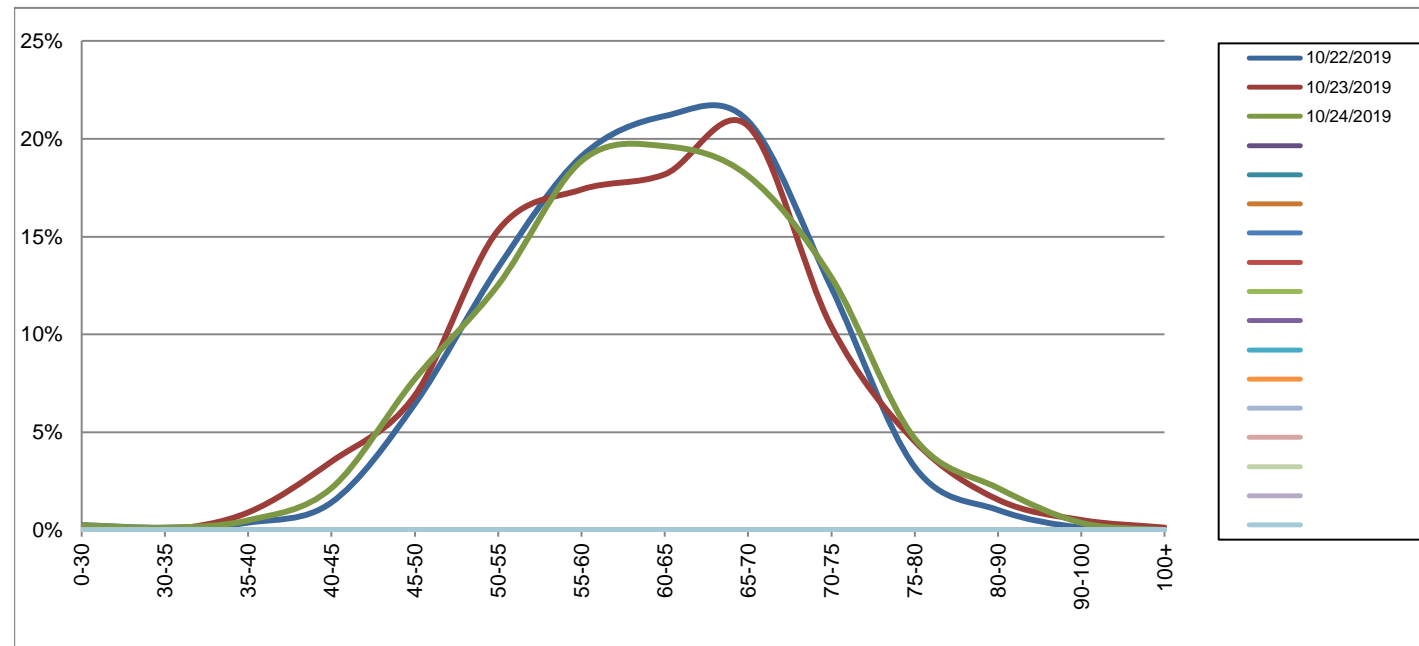
Westbound

October 22, 2019 to October 24, 2019

Daily Speed Bin Percentages														Daily Speed Bin Volumes														Total	Avg.	
Bin #	1	2	3	4	5	6	7	8	9	10	11	12	13	14	1	2	3	4	5	6	7	8	9	10	11	12	13	14	Volume	Speed
Bin Speeds	0-30	30-35	35-40	40-45	45-50	50-55	55-60	60-65	65-70	70-75	75-80	80-90	90-100	100+	0-30	30-35	35-40	40-45	45-50	50-55	55-60	60-65	65-70	70-75	75-80	80-90	90-100	100+		
10/22/2019	0.3%	0.1%	0.4%	1.4%	6.5%	13.4%	19.1%	21.2%	20.9%	12.4%	3.2%	1.0%	0.1%	0.0%	2	1	3	11	50	104	148	164	162	96	25	8	1	0	775	62
10/23/2019	0.0%	0.0%	0.9%	3.5%	6.9%	15.3%	17.4%	18.2%	20.6%	10.4%	4.5%	1.6%	0.5%	0.1%	0	0	7	27	53	118	134	140	159	80	35	12	4	1	770	61
10/24/2019	0.3%	0.1%	0.5%	2.2%	7.7%	12.5%	18.9%	19.6%	18.1%	12.9%	4.7%	2.2%	0.4%	0.0%	2	1	4	17	61	99	149	155	143	102	37	17	3	0	790	62
Total	0.2%	0.1%	0.6%	2.4%	7.0%	13.7%	18.5%	19.7%	19.9%	11.9%	4.2%	1.6%	0.3%	0.0%	4	2	14	55	164	321	431	459	464	278	97	37	8	1	2335	62

Speed Data Summary

Bin #	1	2	3	4	5	6	7	8	9	10	11	12	13	14	Total
Bin Speeds	0-30	30-35	35-40	40-45	45-50	50-55	55-60	60-65	65-70	70-75	75-80	80-90	90-100	100+	
Survey Total	4	2	14	55	164	321	431	459	464	278	97	37	8	1	2335
% Total	0.2%	0.1%	0.6%	2.4%	7.0%	13.7%	18.5%	19.7%	19.9%	11.9%	4.2%	1.6%	0.3%	0.0%	100%
Accumulated %	0.2%	0.3%	0.9%	3.2%	10.2%	24.0%	42.4%	62.1%	82.0%	93.9%	98.0%	99.6%	100.0%	100%	
Inverse Accum. %	99.8%	99.7%	99.1%	96.8%	89.8%	76.0%	57.6%	37.9%	18.0%	6.1%	2.0%	0.4%	0.0%	0.0%	
Average Speed	62 KM/H														



Site notes:

Hartland Ave between 244 and 256 Hartland Ave

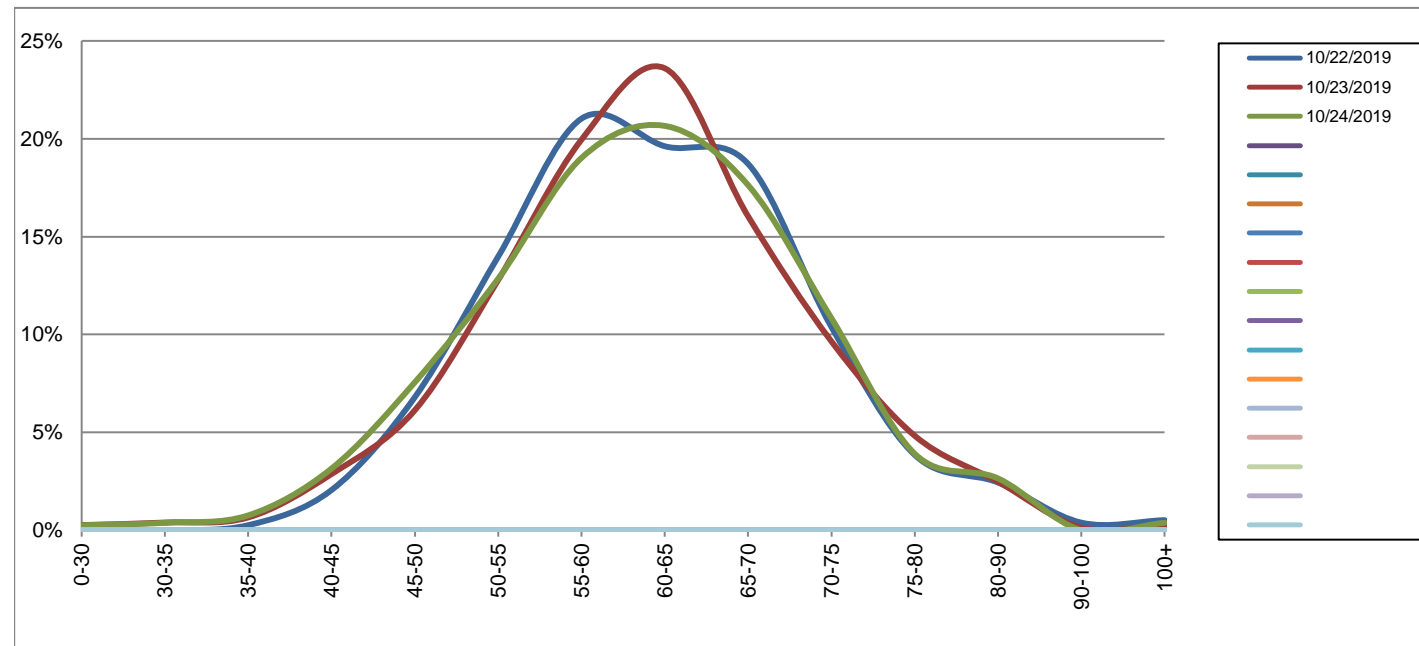
Eastbound

October 22, 2019 to October 24, 2019

Daily Speed Bin Percentages														Daily Speed Bin Volumes														Total	Avg.	
Bin #	1	2	3	4	5	6	7	8	9	10	11	12	13	14	1	2	3	4	5	6	7	8	9	10	11	12	13	14	Volume	Speed
Bin Speeds	0-30	30-35	35-40	40-45	45-50	50-55	55-60	60-65	65-70	70-75	75-80	80-90	90-100	100+	0-30	30-35	35-40	40-45	45-50	50-55	55-60	60-65	65-70	70-75	75-80	80-90	90-100	100+		
10/22/2019	0.0%	0.0%	0.3%	2.1%	6.8%	14.0%	21.0%	19.6%	18.7%	10.4%	3.8%	2.4%	0.4%	0.5%	0	0	2	16	53	109	164	153	146	81	30	19	3	4	780	62
10/23/2019	0.3%	0.4%	0.7%	2.9%	6.1%	12.8%	19.9%	23.6%	16.0%	9.6%	4.8%	2.5%	0.1%	0.3%	2	3	5	22	47	98	153	181	123	74	37	19	1	2	767	62
10/24/2019	0.3%	0.4%	0.8%	3.1%	7.6%	12.8%	19.0%	20.7%	17.6%	10.8%	3.9%	2.6%	0.0%	0.4%	2	3	6	25	60	102	151	164	140	86	31	21	0	3	794	61
Total	0.2%	0.3%	0.6%	2.7%	6.8%	13.2%	20.0%	21.3%	17.5%	10.3%	4.2%	2.5%	0.2%	0.4%	4	6	13	63	160	309	468	498	409	241	98	59	4	9	2341	62

Speed Data Summary

Bin #	1	2	3	4	5	6	7	8	9	10	11	12	13	14	Total
Bin Speeds	0-30	30-35	35-40	40-45	45-50	50-55	55-60	60-65	65-70	70-75	75-80	80-90	90-100	100+	
Survey Total	4	6	13	63	160	309	468	498	409	241	98	59	4	9	2341
% Total	0.2%	0.3%	0.6%	2.7%	6.8%	13.2%	20.0%	21.3%	17.5%	10.3%	4.2%	2.5%	0.2%	0.4%	100%
Accumulated %	0.2%	0.4%	1.0%	3.7%	10.5%	23.7%	43.7%	65.0%	82.4%	92.7%	96.9%	99.4%	99.6%	100%	
Inverse Accum. %	99.8%	99.6%	99.0%	96.3%	89.5%	76.3%	56.3%	35.0%	17.6%	7.3%	3.1%	0.6%	0.4%	0.0%	
Average Speed	62 KM/H														



Site notes:

Hartland Ave between 244 and 256 Hartland Ave

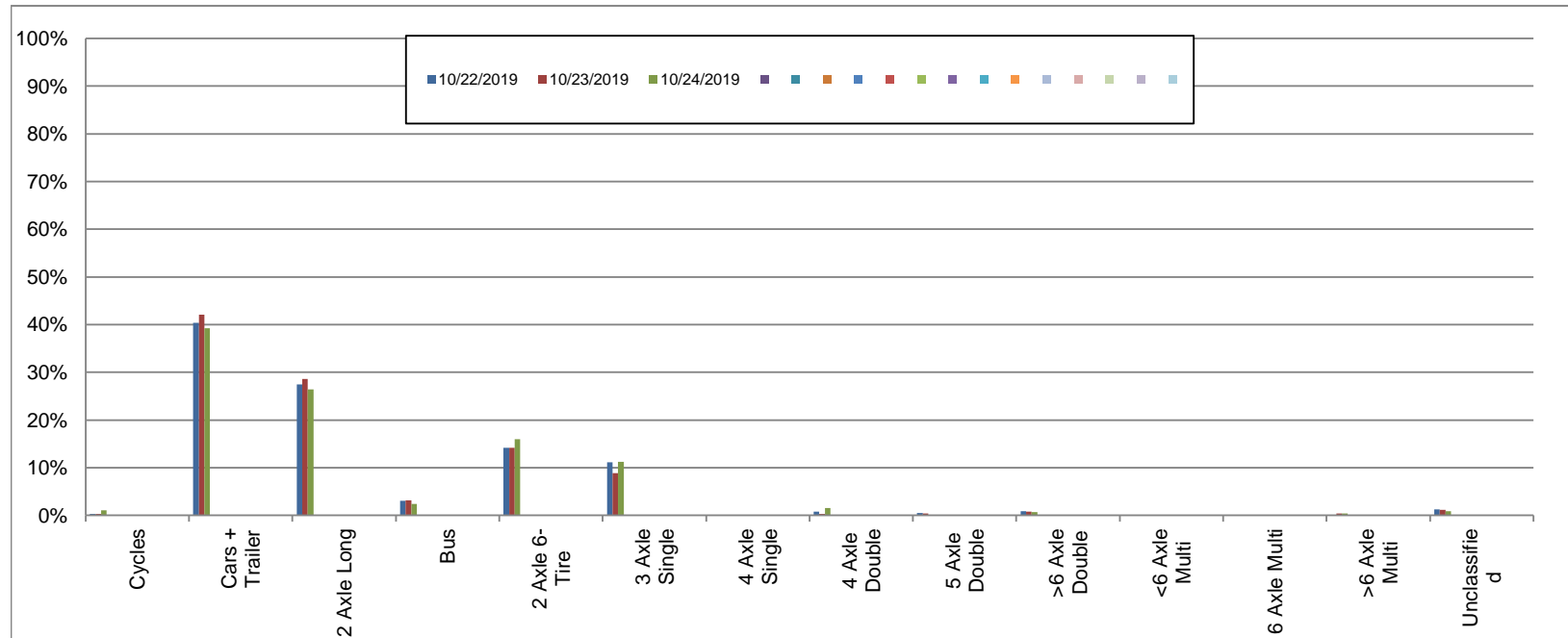
Westbound

October 22, 2019 to October 24, 2019

Daily Class Bin Percentages															Daily Class Bin Volumes														
Bin #	1	2	3	4	5	6	7	8	9	10	11	12	13	14	1	2	3	4	5	6	7	8	9	10	11	12	13	14	Total
Bin Class	Cycles	Cars + Trailer	2 Axle Long	Bus	2 Axle 6-Tire	3 Axle Single	4 Axle Single	4 Axle Double	5 Axle Double	>6 Axle Double	<6 Axle Multi	6 Axle Multi	>6 Axle Multi	Unclassified	Cycles	Cars + Trailer	2 Axle Long	Bus	2 Axle 6-Tire	3 Axle Single	4 Axle Single	4 Axle Double	5 Axle Double	>6 Axle Double	<6 Axle Multi	6 Axle Multi	>6 Axle Multi	Unclassified	Total Volume
10/22/2019	0.3%	40.4%	27.5%	3.1%	14.2%	11.1%	0.0%	0.8%	0.5%	0.9%	0.0%	0.0%	0.0%	1.3%	2	313	213	24	110	86	0	6	4	7	0	0	0	10	775
10/23/2019	0.3%	42.1%	28.6%	3.1%	14.2%	8.8%	0.0%	0.3%	0.4%	0.8%	0.0%	0.0%	0.4%	1.2%	2	324	220	24	109	68	0	2	3	6	0	0	3	9	770
10/24/2019	1.0%	39.2%	26.5%	2.4%	15.9%	11.3%	0.1%	1.5%	0.1%	0.6%	0.0%	0.0%	0.4%	0.9%	8	310	209	19	126	89	1	12	1	5	0	0	3	7	790
Total	0.5%	40.6%	27.5%	2.9%	14.8%	10.4%	0.0%	0.9%	0.3%	0.8%	0.0%	0.0%	0.3%	1.1%	12	947	642	67	345	243	1	20	8	18	0	0	6	26	2335

Class Data Summary

Bin #	1	2	3	4	5	6	7	8	9	10	11	12	13	14	Total
Bin Class	Cycles	Cars + Trailer	2 Axle Long	Bus	2 Axle 6-Tire	3 Axle Single	4 Axle Single	4 Axle Double	5 Axle Double	>6 Axle Double	<6 Axle Multi	6 Axle Multi	>6 Axle Multi	Unclassified	Total Volume
Survey Total	12	947	642	67	345	243	1	20	8	18	0	0	6	26	2335
% Total	0.5%	40.6%	27.5%	2.9%	14.8%	10.4%	0.0%	0.9%	0.3%	0.8%	0.0%	0.0%	0.3%	1.1%	100%
Accumulated %	0.5%	41.1%	68.6%	71.4%	86.2%	96.6%	96.7%	97.5%	97.9%	98.6%	98.6%	98.6%	98.9%	100.0%	
Inv. Accum. %	99.5%	58.9%	31.4%	28.6%	13.8%	3.4%	3.3%	2.5%	2.1%	1.4%	1.4%	1.4%	1.1%	0.0%	



Classification Descriptions

Bin #	Bin Description
1	Motorcycles
2	Passenger cars, including those with recreational trailers
3	2-axle pick-ups, vans, and RVs, including those with recreational trailers
4	Buses
5	2-axle, 6-tire single units
6	3-axle single units
7	4-axle single units
8	3-axle or 4-axle double unit
9	5-axle double unit
10	6-, 7-, or 8-axle double unit
11	5-axle multiple unit
12	6-axle multiple unit
13	7-or-more-axle multiple unit
14	Vehicles that could not be classified

Site notes:

Hartland Ave between 244 and 256 Hartland Ave

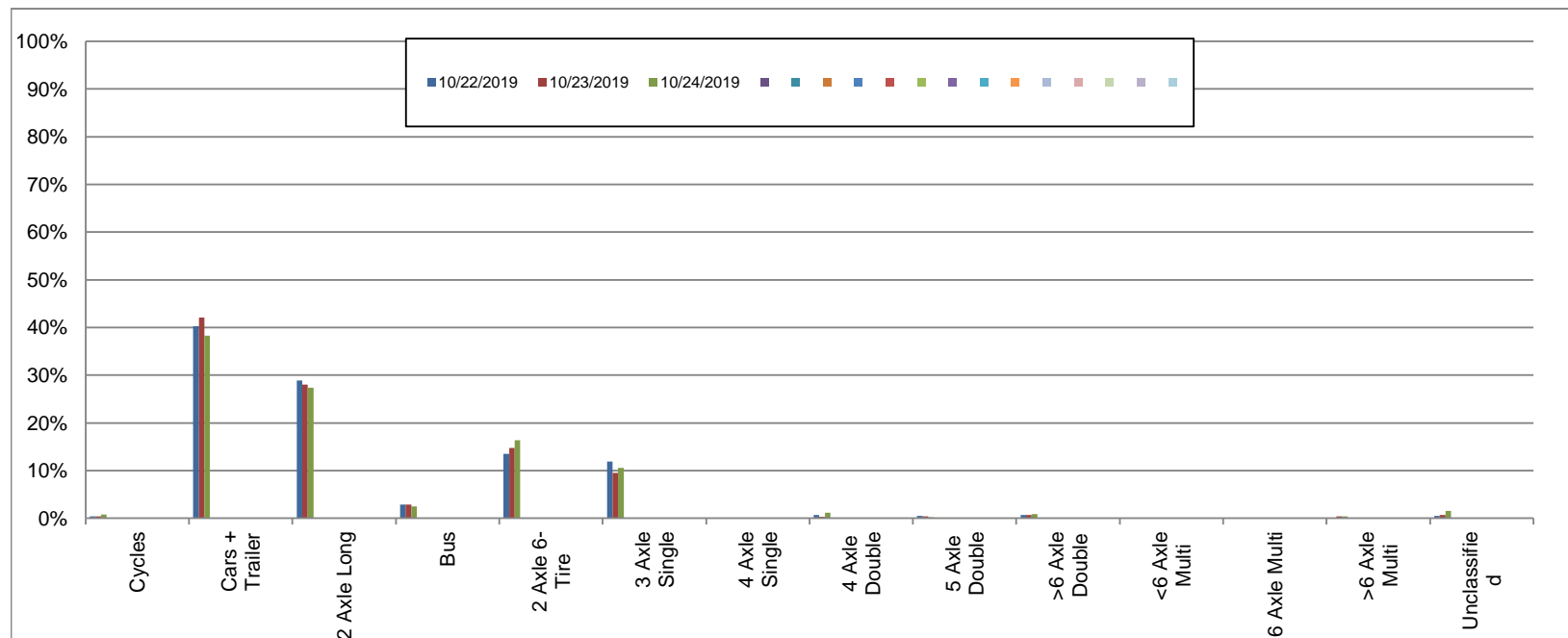
Eastbound

October 22, 2019 to October 24, 2019

Daily Class Bin Percentages															Daily Class Bin Volumes														
Bin #	1	2	3	4	5	6	7	8	9	10	11	12	13	14	1	2	3	4	5	6	7	8	9	10	11	12	13	14	Total Volume
Bin Class	Cycles	Cars + Trailer	2 Axle Long	Bus	2 Axle 6-Tire	3 Axle Single	4 Axle Single	4 Axle Double	5 Axle Double	>6 Axle Double	<6 Axle Multi	6 Axle Multi	>6 Axle Multi	Unclassified	Cycles	Cars + Trailer	2 Axle Long	Bus	2 Axle 6-Tire	3 Axle Single	4 Axle Single	4 Axle Double	5 Axle Double	>6 Axle Double	<6 Axle Multi	6 Axle Multi	>6 Axle Multi	Unclassified	
10/22/2019	0.4%	40.3%	28.8%	2.8%	13.5%	11.9%	0.0%	0.6%	0.5%	0.6%	0.0%	0.0%	0.0%	0.5%	3	314	225	22	105	93	0	5	4	5	0	0	0	4	780
10/23/2019	0.4%	42.1%	28.0%	2.9%	14.7%	9.5%	0.0%	0.3%	0.4%	0.7%	0.0%	0.0%	0.4%	0.7%	3	323	215	22	113	73	0	2	3	5	0	0	3	5	767
10/24/2019	0.8%	38.3%	27.3%	2.5%	16.4%	10.6%	0.0%	1.1%	0.3%	0.9%	0.0%	0.0%	0.4%	1.5%	6	304	217	20	130	84	0	9	2	7	0	0	3	12	794
Total	0.5%	40.2%	28.1%	2.7%	14.9%	10.7%	0.0%	0.7%	0.4%	0.7%	0.0%	0.0%	0.3%	0.9%	12	941	657	64	348	250	0	16	9	17	0	0	6	21	2341

Class Data Summary

Bin #	1	2	3	4	5	6	7	8	9	10	11	12	13	14	Total Volume
Bin Class	Cycles	Cars + Trailer	2 Axle Long	Bus	2 Axle 6-Tire	3 Axle Single	4 Axle Single	4 Axle Double	5 Axle Double	>6 Axle Double	<6 Axle Multi	6 Axle Multi	>6 Axle Multi	Unclassified	Total Volume
Survey Total	12	941	657	64	348	250	0	16	9	17	0	0	6	21	2341
% Total	0.5%	40.2%	28.1%	2.7%	14.9%	10.7%	0.0%	0.7%	0.4%	0.7%	0.0%	0.0%	0.3%	0.9%	100%
Accumulated %	0.5%	40.7%	68.8%	71.5%	86.4%	97.1%	97.1%	97.7%	98.1%	98.8%	98.8%	98.8%	99.1%	100.0%	
Inv. Accum. %	99.5%	59.3%	31.2%	28.5%	13.6%	2.9%	2.9%	2.3%	1.9%	1.2%	1.2%	1.2%	0.9%	0.0%	



Classification Descriptions

Bin #	Bin Description
1	Motorcycles
2	Passenger cars, including those with recreational trailers
3	2-axle pick-ups, vans, and RVs, including those with recreational trailers
4	Buses
5	2-axle, 6-tire single units
6	3-axle single units
7	4-axle single units
8	3-axle or 4-axle double unit
9	5-axle double unit
10	6-, 7-, or 8-axle double unit
11	5-axle multiple unit
12	6-axle multiple unit
13	7-or-more-axle multiple unit
14	Vehicles that could not be classified

Site notes: